

Solar Probe Plus

A NASA Mission to Touch the Sun



Integrated Science Investigation of the Sun Energetic Particles

Preliminary Design Review

05 – 06 NOV 2013

Ground Support Equipment

Reid Gurnee





Outline



- Board Level GSE
- Spacecraft emulators
- GSEOS
- Safe / Arm plugs
- Calibration GSE
- Shipping Containers



Board-Level GSE



- Each lead engineer is responsible for developing their own board-level GSE.
 - **Power Board**: Load board, active load, HV load, breakout box, breakout board, I2C stimulus
 - **Event Board**: energy and TOF preamp boards, test port box, breakout box, I2C slave, commercial pulsers
 - **Anode Board**: Commercial pulsers, scope, HV power supply
- All GSE is peer reviewed

Need EPI-Hi inputs



Spacecraft Emulator

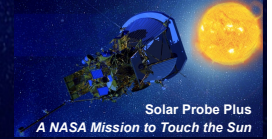


- Mini emulator
 - Provides Instrument Data Interfaces only, No Power Interfaces, No Temperature Interfaces
 - Provides virtual 1PPS
 - GSEOS Interface is fully compliant
 - Non-flight use only
- Full emulator
 - Provides Instrument Data, Power and Temperature Interfaces (no power supply)
 - Provides virtual 1PPS
 - Designed for use with Flight hardware
- GSE verification performed by project
- 3 full, 2 mini emulators for ISIS???

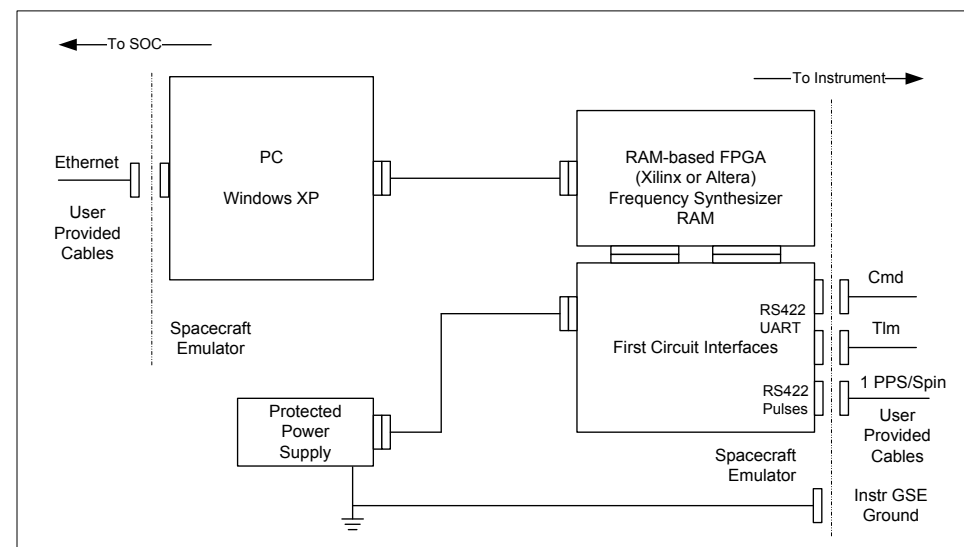
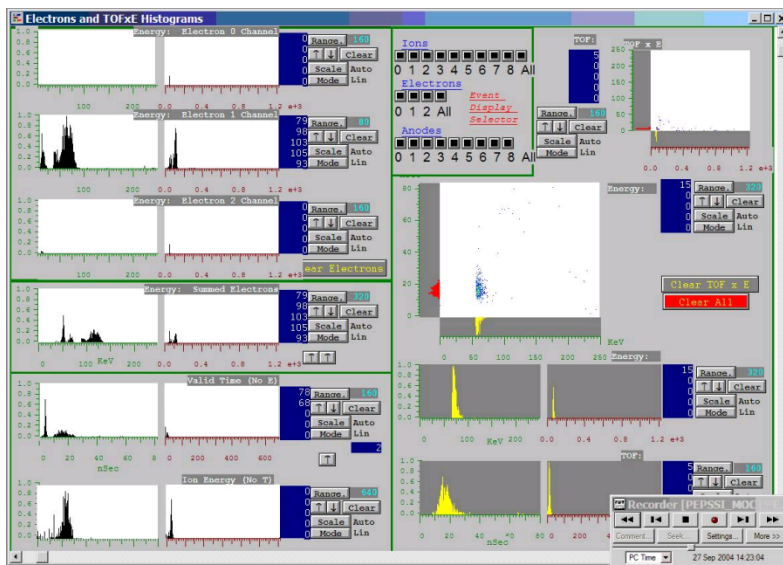




GSEOS



- Common GSE software for all instruments
- Display screens and instrument customizations can be used through all development cycles from bench testing, I&T deployment, to flight operations
- Same platform used for EM, Flight, and Spacecraft operations
 - Test scripts can be developed by individual teams, tested on EMs, and then executed at the S/C level
- Software verification performed by project





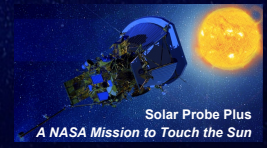
Safe / Arm plugs



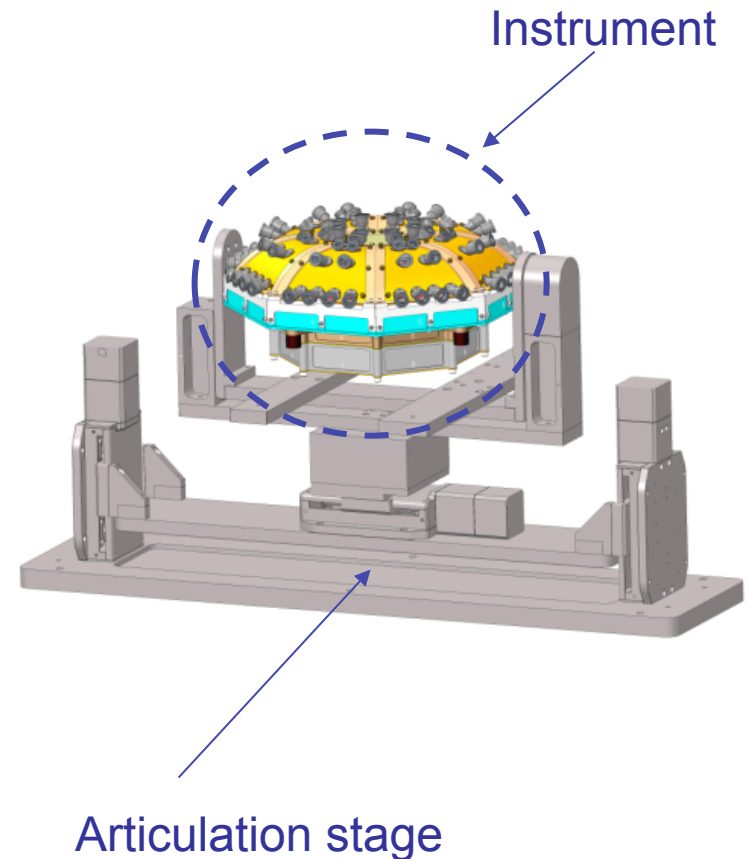
- EPI-Lo has a HV air-safe plug
 - When installed HV is limited to air safe levels (hardware and software limited)
 - Plug will be removed for S/C TV testing
 - Plug will be permanently removed during final closeout
- Instrument covers
 - ISIS instruments will have red-tag covers to protect the apertures
 - Covers will be temporarily removed for S/C TV testing
 - Covers will be permanently removed during final closeout



Calibration GSE for Instrument Articulation

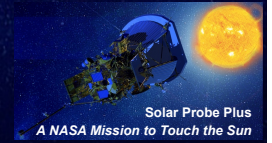


- Requirements
 - Use in APL accelerator facility
 - Vacuum compatible (low outgassing)
 - Cover full FOV for one octant
- Status
 - Specified and purchased custom system from Newmark Systems
 - Received January '09
 - Re-furbished in '12 at Newmark. Added additional controller and position sensor feedback on all motors.
 - Fully set up in vacuum chamber with all feed-throughs and control software
- Future Work
 - Build adaptor plate for EPI-Lo
 - Test with mass prototype

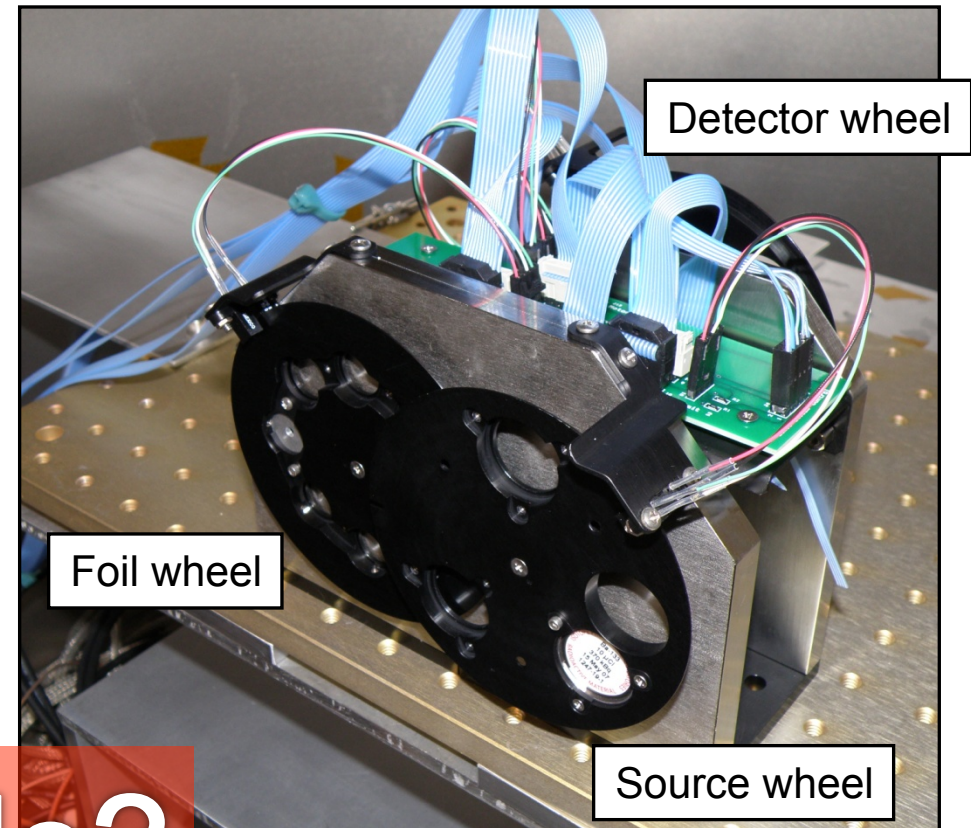




Calibration GSE for Beam Generation



- Requirements
 - Use in APL calibration facility with particle accelerator
 - Vacuum compatible (low outgassing)
 - Allow user to select ion or electron calibration source and intensity
 - No stray light from optical switches
- Status
 - Designed and built custom system
 - Three-wheel implementation
 - Optical switches off when not homing
 - Installed and in use in APL facility



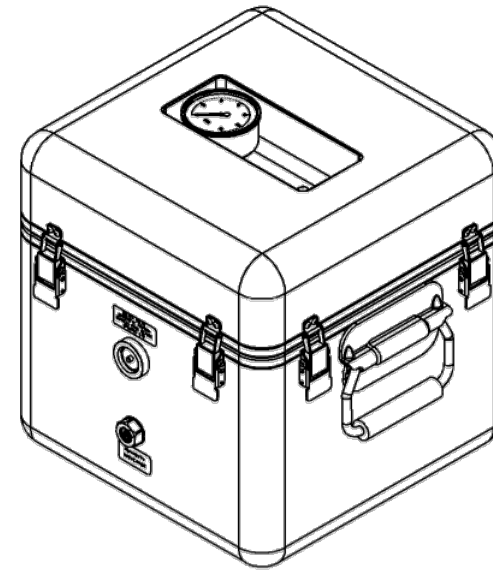
Optional slide?



Mechanical GSE



- Shipping Container
 - Requirements
 - N2 purged, humidity controlled and monitored
 - Low outgassing
 - Shock mounted and monitored
 - Hermetically sealed with pressure relief valve
- Environmental Test Fixtures
 - Thermal Vacuum Fixture
 - Vibration Plate Fixture
- Purge Suitcase





Summary



- GSE highly leveraged from previous programs
- Most GSE is built and reading for instrument testing